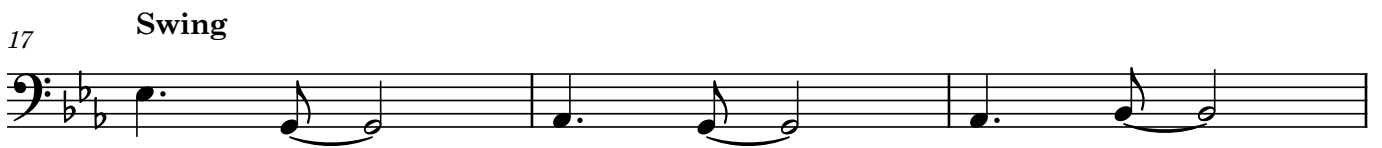


Bass

# Der Bergmannsstand

Arr.: Fred

even ♩ = 95



|| A<sup>b</sup><sub>Δ</sub> B<sup>b</sup> | C<sub>-7</sub> G<sub>-7</sub> | F<sub>-7</sub> G<sub>-7</sub> | A<sup>b</sup><sub>Δ</sub> B<sup>b</sup> |  
| E<sup>b</sup><sub>Δ</sub> F | B<sup>b</sup><sub>D</sub> E<sup>b</sup><sub>Δ</sub> | C<sub>-7</sub> F<sub>7</sub> | B<sup>b</sup><sub>9</sub><sub>SUS</sub> ||